



ADVANC3™

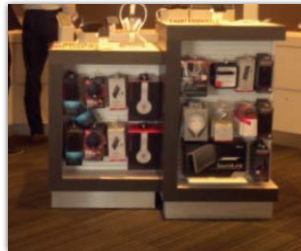
3mm Solid Surfacing

- Avonite Acrylic 1/8" (3mm) solid surface material that is seamless and renewable.
- Great for surfacing applications in retail displays. Comes in sizes up to 60" (1524mm) wide and 204" (5182mm) long that can be laminated to rigid substructures like MDF.
- Designed for non-kitchen applications where you demand durability and ease of maintenance.
- Great for hospital applications such as nurses' stations, work stations, and patient room countertops. Solid surface is a preferred material in healthcare facilities.
- Can provide significant cost savings over traditional 1/2" (12mm) solid surface and deliver the same benefits in many applications.
- A perfect substitute for high-pressure laminate where you demand a hygienic environment with no seams.

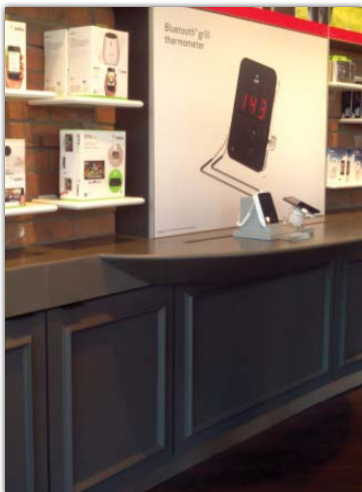
FEATURES	BENEFITS
ADVANC3™ vs 1/2" (12mm)	Material & shipping cost savings
Avonite Acrylic solid surface	Seamless & renewable = hygienic, durable, easy to maintain
Custom size up to 60" (1524mm) wide	Reduced seams = faster install = more projects per year Reduced seams = less labor = less labor costs Optimized sheet = less waste = less material costs
ADVANC3™ vs high-pressure laminate	Seamless, renewable, hygienic, and has a durable edge
Increased thermoformability over 1/2" (12mm)	Ease of fabrication and flexibility of design



Retail Display



Retail Display



Retail Display



Patient Room



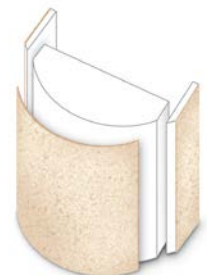
Nurses' Station



Work Station



Work Station



ADVANC3™ Colors and Textures



Physical Properties

All data contained herein applies to the 3mm solid surface sheet alone. Technical data relative to the finished, laid-up product is not included here and will vary based on the substrate and assembly methods used.

PROPERTY	TYPICAL VALUES	TEST METHOD
General:		
Thickness	0.125 in (3.17mm)	
Specific Gravity	1.60	ASTM D-792
Water Absorption	0.04%	ASTM D-570
Mechanical:		
Tensile Strength	4,000 psi	ASTM D-638
Tensile Modulus	1,070,000 psi	ASTM D-638
Tensile Elongation	1.5%	ASTM D-638
Flexural Strength	7,600 psi	ASTM D-790
Flexural Modulus	940,000 psi	ASTM D-790
Izod Impact (Un-notched)	1.17 ft-lbs/in	ASTM D-4812
Notched Izod Impact	0.48 ft-lbs/in	ASTM D-256
Rockwell Hardness (M)	73	ASTM D-785
Barcol Hardness	59	ASTM D-2583

ADVANC3™ is not to be used in a kitchen environment where hot cooking appliances or dishwashers are used.

ADVANC3™ can be restored. Visible damage to finishes caused by impacts or scratches and chemicals can easily be removed using a Scotch-Brite® sponge. Stubborn changes in finishes can be removed by sanding.

For cautions and other information relating to handling of and exposure to this product, please see the applicable safety data sheet published by Aristech Surfaces LLC.

For additional colors not part of the custom program, see avonite.com. Avonite's color lab can also make custom colors on demand.

PROPERTY	TYPICAL VALUES	TEST METHOD
Thermal:		
DTUL® 264 psi (1.82 MPa)	195 °F	ASTM D-648
Coeff. of Linear Thermal Expansion	2.3 x 10 ⁻⁶ in./in./°F	ASTM D-696
Boiling Water Resistance	No Effect	ISSFA SST 8.1-00
High Temperature Resistance	No Effect	ISSFA SST 9.1-00
Flame Spread Index	<75	ASTM E-84
Smoke Generation Index	<100	ASTM E-84
Combustion Toxicity	Solid Colors - 98	Pittsburgh Protocol
	Patterns - 67	(LC ₅₀ Test)
Surface:		
Consistency of Color (Same Sheet)	Passes	ISSFA SST 2.1-00
Light Resistance	No Effect	ISSFA SST 7.1-00
Cleanability/Stain Resistance	13/No Effect	NEMA LD3-3.4
Stain Resistance	Passes	ANSIZ-124.3
Fungi Resistance	No Growth	ASTM G-21
Food Zone Use	NSF 51 Approved	NSF



Call your Sierra Sales Consultant for information on other programs and benefits offered by Avonite.



Sierra Forest Products
www.sierrafp.com

Chicago	1 800 646 7564	sales_chicago@sierrafp.com
Denver	1 877 972 9112	sales_denver@sierrafp.com
Salt Lake City	1 800 678 2801	sales_saltlakecity@sierrafp.com
St. George	1 800 678 2801	sales_stgeorge@sierrafp.com
Coeur d'Alene	1 877 722 0070	sales_coeurdalene@sierrafp.com
Seattle	1 877 722 0070	sales_seattle@sierrafp.com
Portland	1 877 722 0070	sales_portland@sierrafp.com